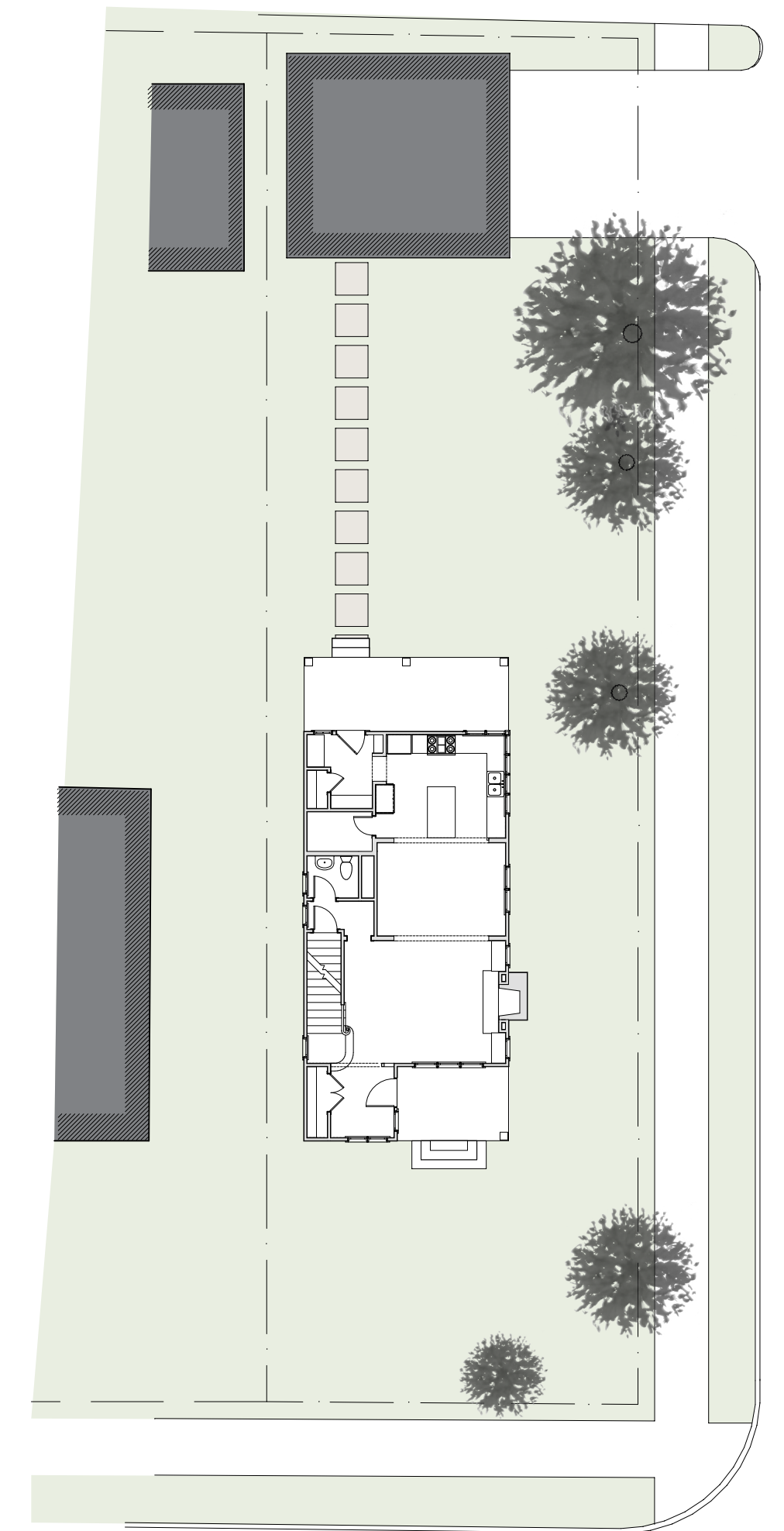


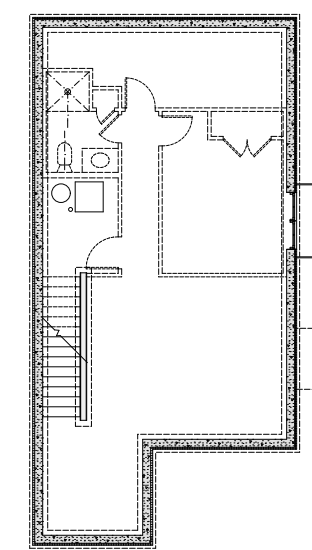


Site Context

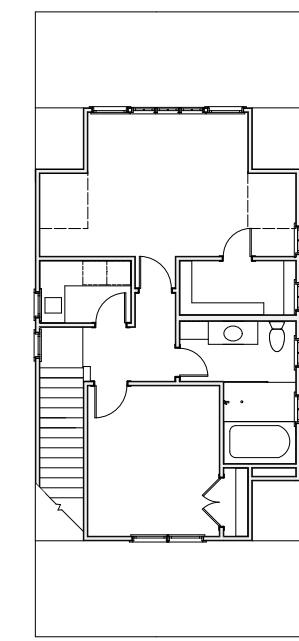


NOKOMIS BUNGALOW

A corner lot in an established south Minneapolis neighborhood provides the setting for this modest new bungalow. The design takes into account the fabric of the neighborhood while responding to the dreams and goals of the owners. The craftsmanship in this home is evident throughout. The living spaces on the main level flow together, allowing the home to live larger than its actual size. A welcoming entry opens to the comfortable living room that leads to the dining room and kitchen. A walk-in pantry off the kitchen and a mudroom complete the light-filled main level. The successful completion of this home demonstrates how the architect and the builder, working as a team with the owner, can achieve a well-designed and crafted, energy efficient home within a modest budget.



Basement Floor Plan



Second Floor Plan



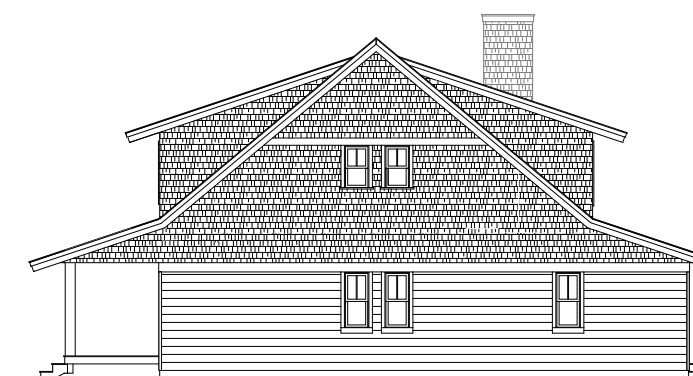
West Elevation



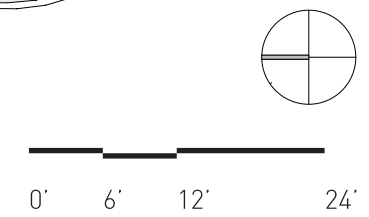
South Elevation



East Elevation



North Elevation



Site Plan with First Floor Plan

