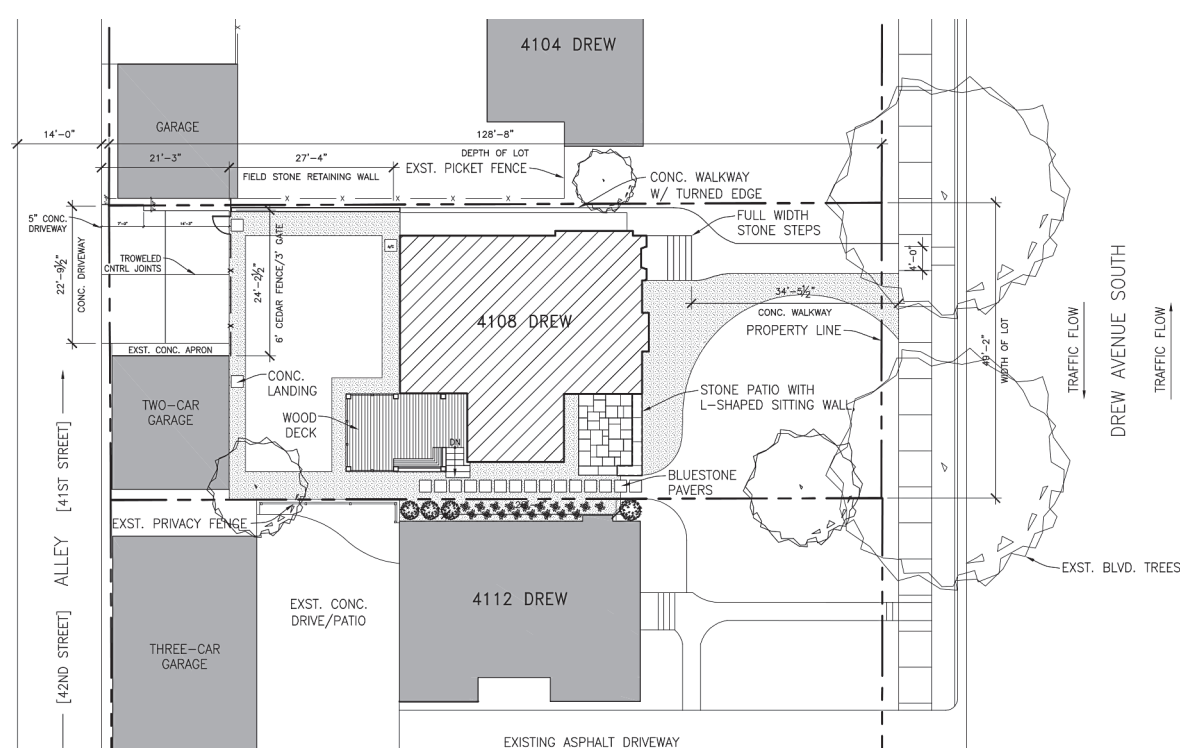




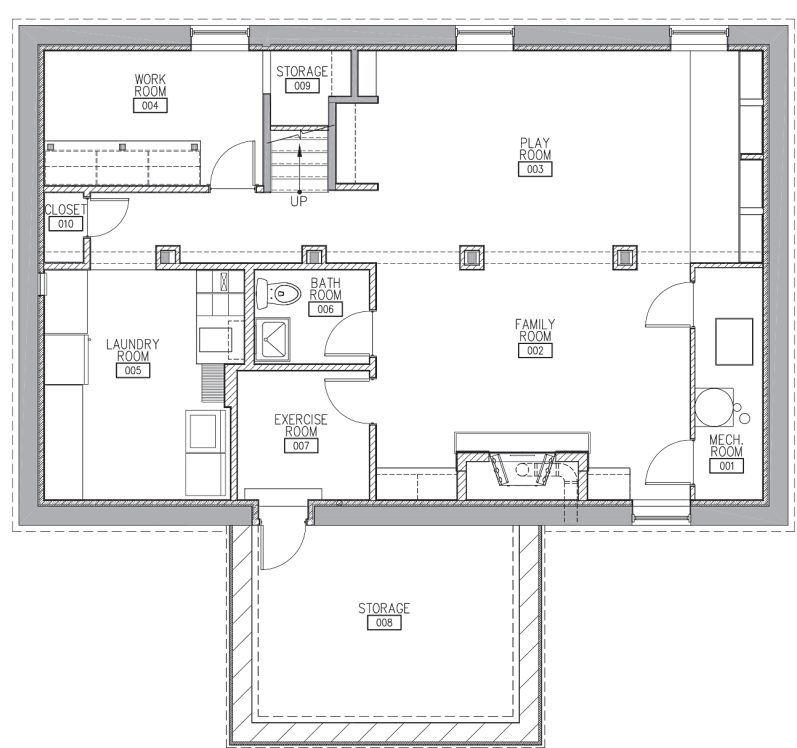
Razing the Roof A Whole House Renovation

4108 Drew Avenue << Linden Hills Neighborhood >>

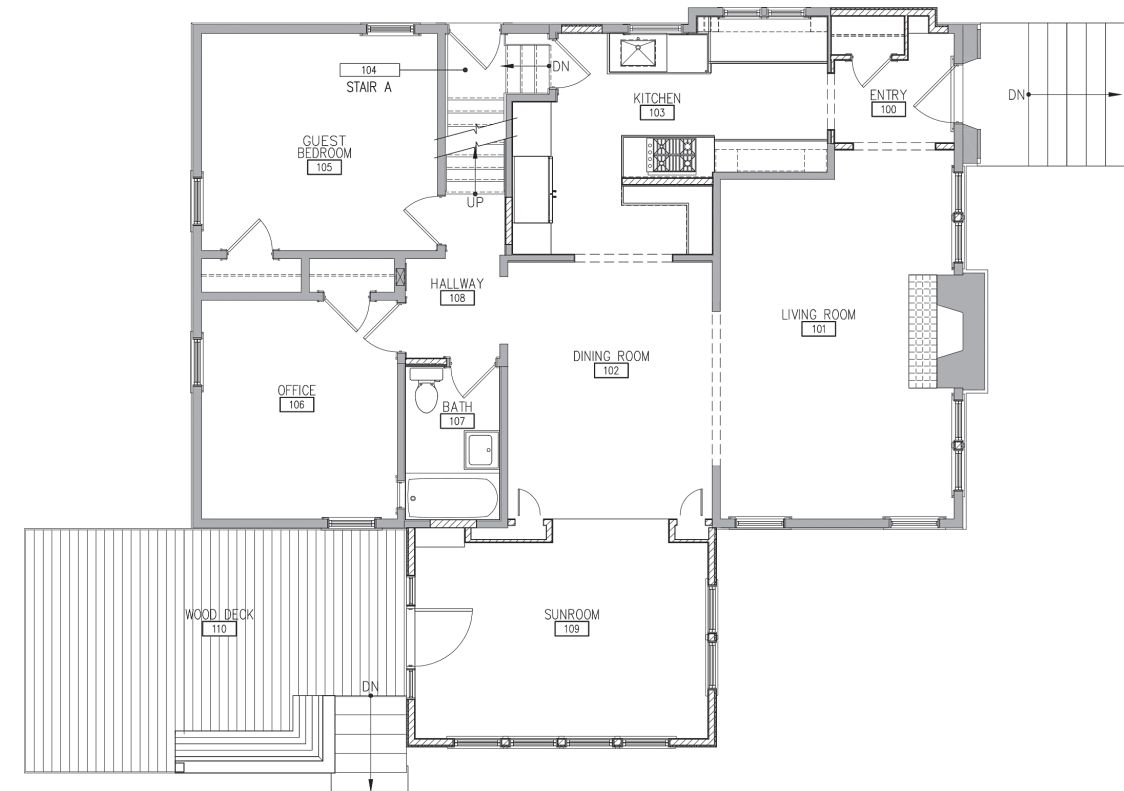
A neglected 1924 story and a half was given new life after the roof was removed and a second story and two-story addition were added. A bluestone patio and landscaping completed the project.



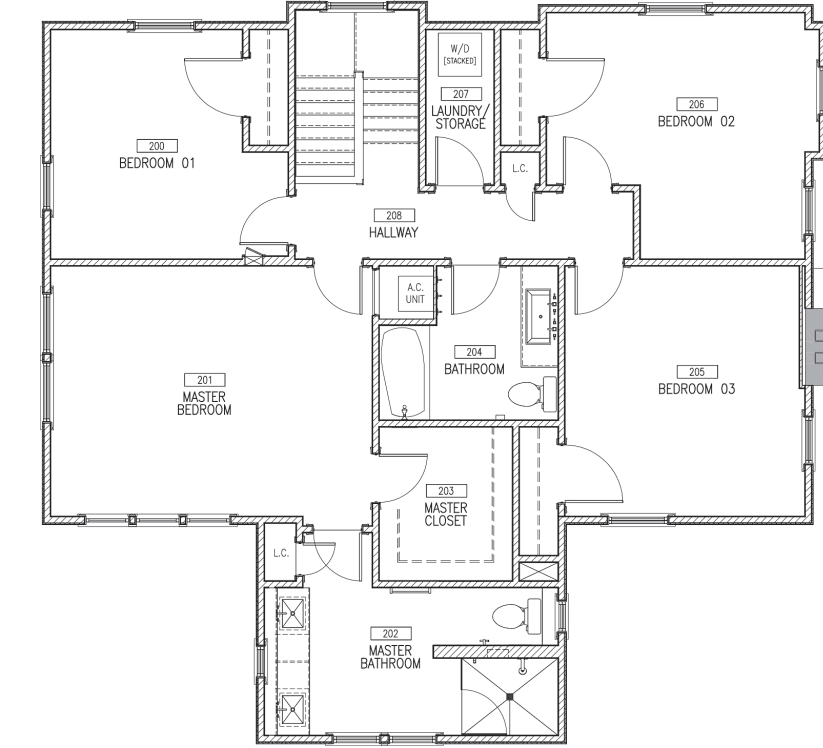
1 Site Plan 4108 Drew Avenue South
SCALE: NTS



2 Floor Plan Lower Level
SCALE: NTS



3 Floor Plan Main Level
SCALE: NTS



4 Floor Plan Upper Level
SCALE: NTS



Existing Condition
Roof was removed and a full-height second story was added



Bluestone paver patio with limestone sitting wall



Existing Condition
The existing sunroom was removed to make way for addition